

Summer Lesson Options for existing Capital Music Center Students

Your registration agreement is for year round lessons including summer months. Our summer schedule is flexible enough to allow for vacations and time off for students while still maintaining musical continuity. Continuous students are not subject to tuition increases that occur each fall. Tuition payments are still due on June 1, July 1, and August 1 and provides you with one of the following options (**Please : Initial Choice**)

- Best Value:** Two PIANO CAMPS of your choice
(Equivalent of 12 lessons, Resuming Fall lessons 8/25/08)
- Better Value:** One PIANO CAMP of your choice + four REGULAR LESSONS scheduled at your convenience (Equivalent of 10 lessons, Resuming Fall lessons 8/25/08)
- Good Value:** Eight REGULAR LESSONS scheduled at your convenience (Equivalent of 8 lessons, Resuming Fall lessons 8/25/08)
- Convenience:** Zero to Seven REGULAR LESSONS scheduled at your convenience (This option for students who do not want to lose their spot in the Fall but will still make the June, July, and August tuition payments, Resuming Fall lessons 8/25/08)
- ADULTS:** Continue as usual. Discuss any summer schedule fluctuations directly with your teacher.
- None of the above.** I choose to withdraw effective this summer and this serves as my minimum 30-day notice. I understand that if I decide to re-enroll at a future date that I may be placed on a waiting list for our next available teacher. Re-enrolling students also pay a new registration fee and the new tuition rate of \$110

SPECIAL: Add a camp for only \$50

Please mark your choice(s) below. Please circle **two or more** date choices for each camp that you pick. **Materials fee for each camp is \$15**



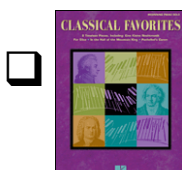
HIGH SCHOOL MUSICAL: Learn all of your favorite tunes from High School Musical 1 AND 2.
T-W-Th 2-4pm offered weeks of June 10-12, June 24-26, July 15-17, July 29-31, or Aug 12-14
T-W-Th 5-7pm offered weeks of June 17-19, July 8-10, July 22-24, or Aug 5-7



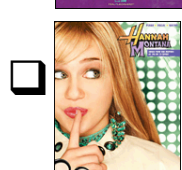
UP, DOWN, LEFT, RIGHT, A, B, START! (Video Game Music): Songs from Super Mario Brothers to Guitar Hero.
T-W-Th 2-4pm offered weeks of June 17-19, July 8-10, July 22-24, or Aug 5-7
T-W-Th 5-7pm offered weeks of June 10-12, June 24-26, July 15-17, July 29-31, or Aug 12-14



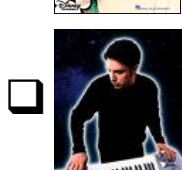
BEATLES! BEATLES! BEATLES!: Learn top hits from one of the best bands in the world.
T-W-Th 2-4pm offered weeks of June 10-12, June 24-26, July 15-17, July 29-31, or Aug 12-14
T-W-Th 5-7pm offered weeks of June 17-19, July 8-10, July 22-24, or Aug 5-7



ROLL OVER BEETHOVEN: Students will bring to life the music of the world's greatest classical composers including Beethoven, Mozart, Tchaikovsky & many more!
T-W-Th 2-4pm offered weeks of June 17-19, July 8-10, July 22-24, or Aug 5-7
T-W-Th 5-7pm offered weeks of June 10-12, June 24-26, July 15-17, July 29-31, or Aug 12-14



DOWN WITH DISNEY: Learning Songs from Hannah Montana, Pirates of the Caribbean, Toy Story, Beauty and the Beast, Enchanted & The Lion King!
T-W-Th 2-4pm offered weeks of June 10-12, June 24-26, July 15-17, July 29-31, or Aug 12-14
T-W-Th 5-7pm offered weeks of June 17-19, July 8-10, July 22-24, or Aug 5-7



PIANO BAND: For students who are 12 to 18, and HL4 equivalent or higher, choose this camp with "Better Value" above. Play in a piano band, we will use Roland digital pianos as drums, guitars, basses, violins, trumpets, etc. We will rehearse T-W-Th, on one of these weeks: July 15 or 29, Aug 5 or 12 (please circle 2 or more, most popular weeks & times will be confirmed). We will have at least one off-site performance opportunity after the camp.

Student's Name

Parent's Signature

Teacher's Name